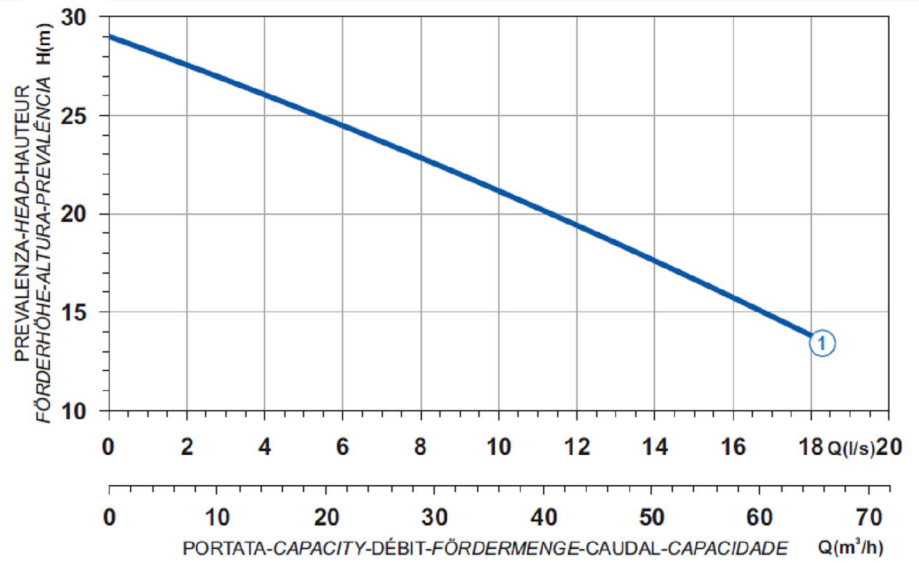




	Ghisa EN-GJL-250		Cast Iron EN-GJL-250
	Fonte EN-GJL-250		Grauguss EN-GJL-250
	Hierro fundido EN-GJL-250		Ferro fundido EN-GJL-250

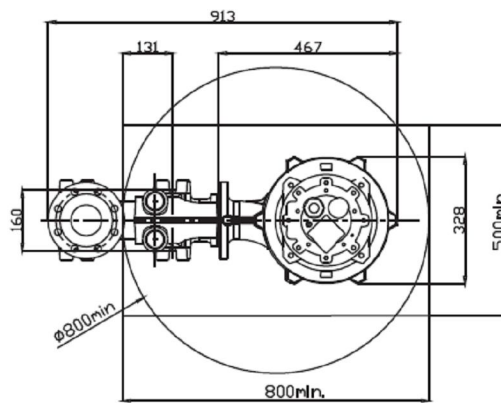
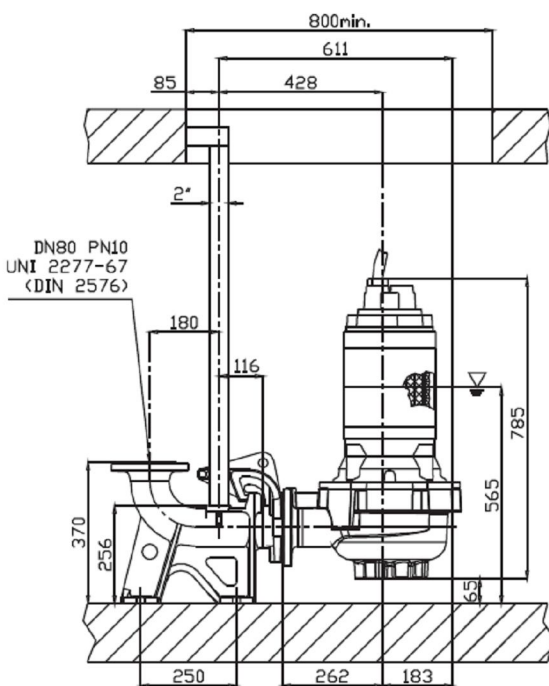
Curva caratteristica - Performance curve - Courbe caractéristique
Kennlinie - Curva característica - Curva característica



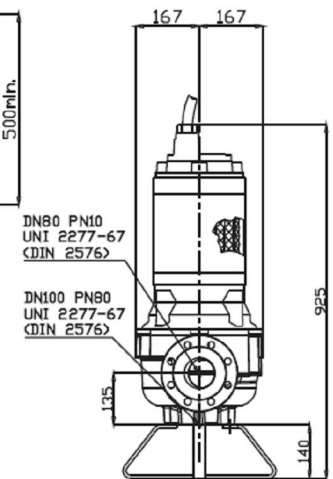
Power supply	3ph 400/690V 50Hz
R.P.M.	2850
Free passage (mm)	70
Discharge (mm)	DN 80
Weight (Kg)	160

Curve N°	Code	Type	MOTOR			ATEX code
			Nominal power P2 (kW)	Nominal current I (A)	Starting current Is (A)	
1	7001683	G211R3V1-M70AA2	7,4	13,8	81,4	7008832

Dimensioni - Dimensions - Dimensions - Abmessungen - Dimensiones - Dimensões (mm)



▽ LIVELLO MINIMO SOMMERGIBILITÀ
MINIMUM SUBMERSIBLE LEVEL
NIVEAU MINIMUM D'IMMERSION
MINDESTWASSERSTAND
MINIMO NIVEL
NIVEL MINIMO DE SUBMERGIBILIDADE



Versione disponibile con mantello di raffreddamento - Type available also with cooling jacket
Version disponible avec chemise de refroidissement - Ausführung auch mit Kühlmantel lieferbar
Disponible también con camisa de refrigeración - Versão disponível com cobertura de arrefecimento