

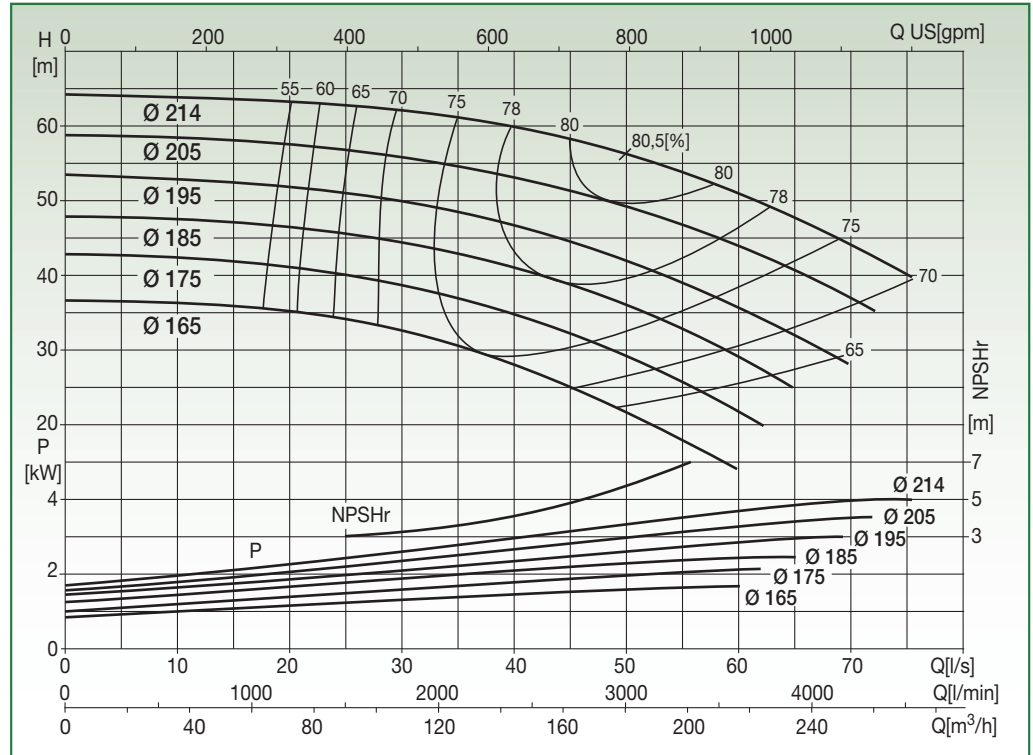
# N2SG 80-20

# EN 733 STANDARD PUMP 2900 rpm



Liquid temp.: -10°C +120°C  
Max. ambient temp.: +40°C

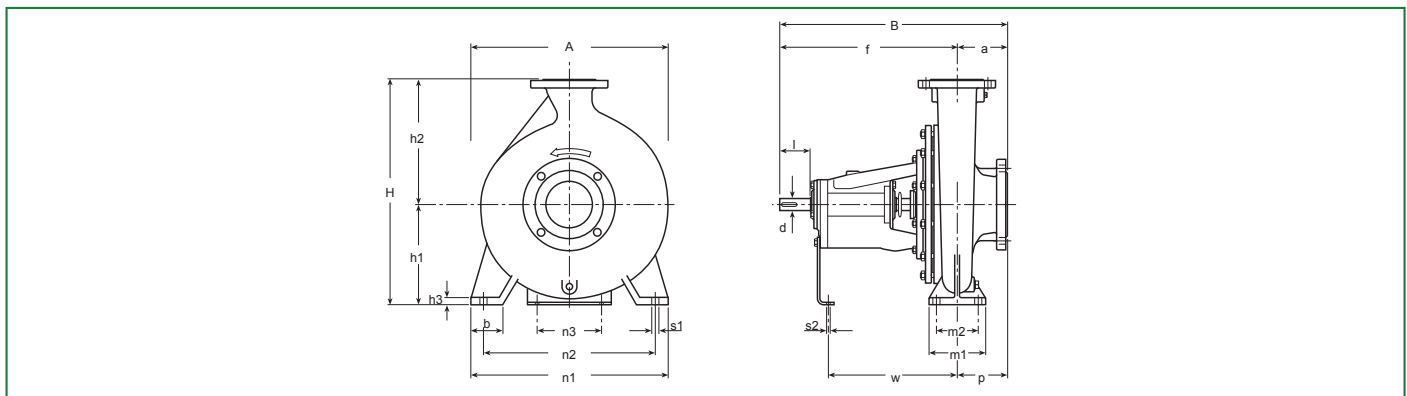
Special versions on request



Test to UNI EN ISO 9906 level 2 - Test liquid: water ( $\rho = 1000 \text{ kg/m}^3$ , kinematic viscosity  $\nu = 1 \text{ mm}^2/\text{s}$ )  
Tolerance on performance curves to UNI EN ISO 9906 Annex A

## PERFORMANCE DATA

Code	Type	Motor P2 Rated		Capacity												
				H [m]												
		[kW]	[HP]	l/s	0	10	20	30	40	50	60	65	70	75		
10038014	N2SG 80-20.165	18,5	25	36,6	36,2	35,2	32,5	28	21,6	13,9						
10038015	N2SG 80-20.175	22	30	42,8	42,3	41	38,5	34,8	29,1	21,8						
10038016	N2SG 80-20.185	30	40	47,8	47,5	46,4	44,4	41	35,8	29,1	25					
10035066	N2SG 80-20.195	30	40	53,5	52,8	51,8	50	46,6	41,9	35,5	32	28,2				
10038017	N2SG 80-20.205	37	50	58,7	58,4	57,6	55,9	53,2	49,3	43,9	40,7	36,9				
10035068	N2SG 80-20.214	45	60	64,2	63,9	63,2	62,1	60	56,2	50,9	47,7	44,1	40			



## DIMENSIONAL DATA

Type	DNA	DNM	Pump															Shaft		Key	Weight [kg]	A [mm]	B [mm]	H [mm]	Area [m²]	Vol. [m³]
			a	f	h <sub>1</sub>	h <sub>2</sub>	b	m <sub>1</sub>	m <sub>2</sub>	n <sub>1</sub>	n <sub>2</sub>	n <sub>3</sub>	h <sub>3</sub>	s <sub>1</sub>	s <sub>2</sub>	w	p	d	l							
N2SG 80-20	100	80	125	470	180	250	65	125	95	345	280	110	14	14	14	342	125	32	80	10x8	70	345	595	430	0,21	0,09