

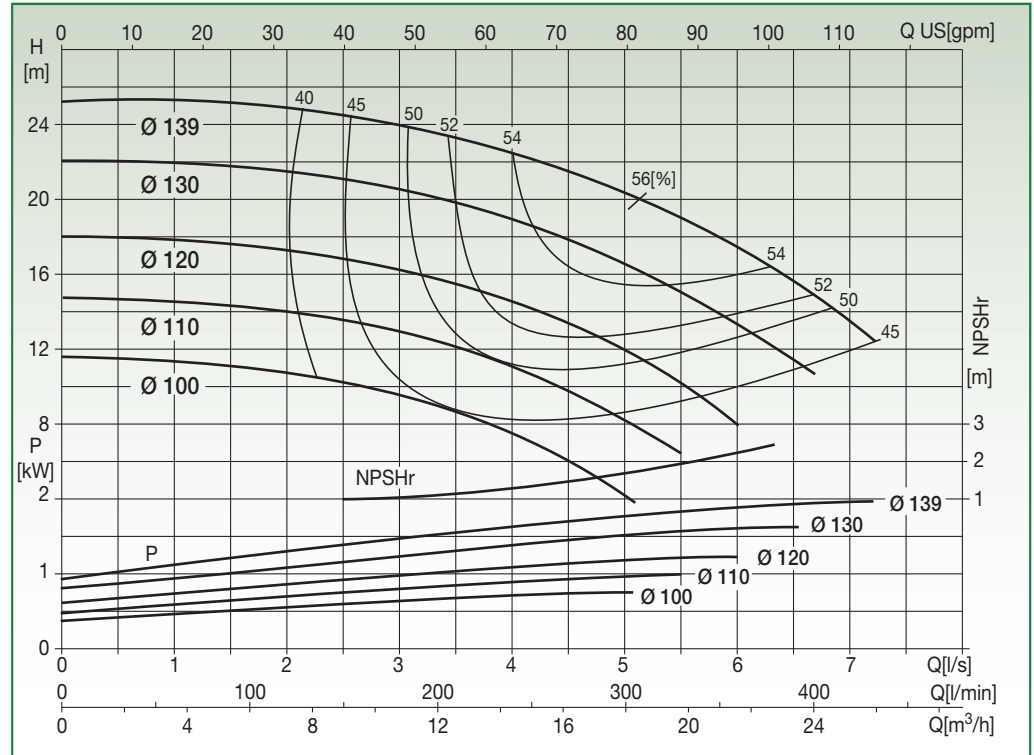
N2SG 32-13

EN 733 STANDARD PUMP 2900 rpm



Liquid temp.: -10°C +120°C
Max. ambient temp.: +40°C

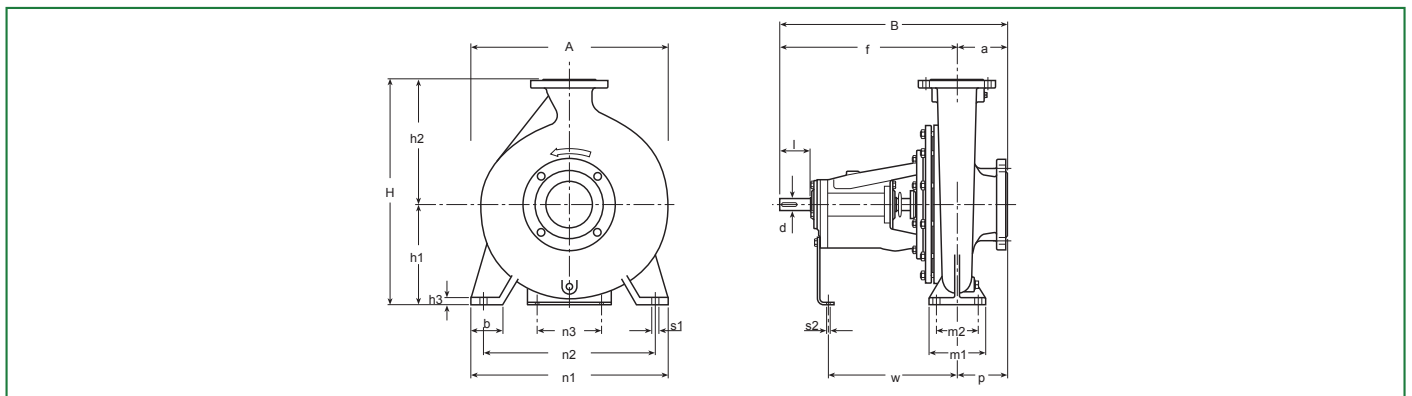
Special versions on request



Test to UNI EN ISO 9906 level 2 - Test liquid: water ($\rho = 1000 \text{ kg/m}^3$, kinematic viscosity $\nu = 1 \text{ mm}^2/\text{s}$)
Tolerance on performance curves to UNI EN ISO 9906 Annex A

PERFORMANCE DATA

Code	Type	Motor P2 Rated		Capacity								
		[kW]	[HP]	I/s	0	1	2	3	4	5	6	7
				m³/h	0	3,6	7,2	10,8	14,4	18	21,6	25,2
10037943	N2SG 32-13.100	0,75	1	H [m]	11,7	11,5	10,8	9,6	7,5	4,1		
10037944	N2SG 32-13.110	1,1	1,5		14,8	14,7	14	12,9	11,2	8,2		
10037945	N2SG 32-13.120	1,5	2		18	17,8	17,3	16,2	14,7	12	8	
10037946	N2SG 32-13.130	2,2	3		22	21,9	21,5	20,6	18,9	16,5	13,3	
10037947	N2SG 32-13.139	2,2	3		25,2	25,3	24,9	24	22,5	20,4	17,5	13,5



DIMENSIONAL DATA

Type	DNA	DNM	Pump														Shaft		Key	Weight [kg]	A [mm]	B [mm]	H [mm]	Area [m²]	Vol. [m³]	
			a	f	h ₁	h ₂	b	m ₁	m ₂	n ₁	n ₂	n ₃	h ₃	s ₁	s ₂	w	p	d								l
N2SG 32-13	50	32	80	360	112	140	50	100	70	190	140	100	14	14	14	167	80	24	50	8x7	27	190	440	252	0,08	0,02