

Intake/delivery connections 1/2" - flow rate 50 l/min

MINIBOXER - BOXER 50



STANDARD: II 3/3G D IIB T 135°C (zone 2)
CONDUCT: II 2/2GD c IIB T 135°C (zone 1)

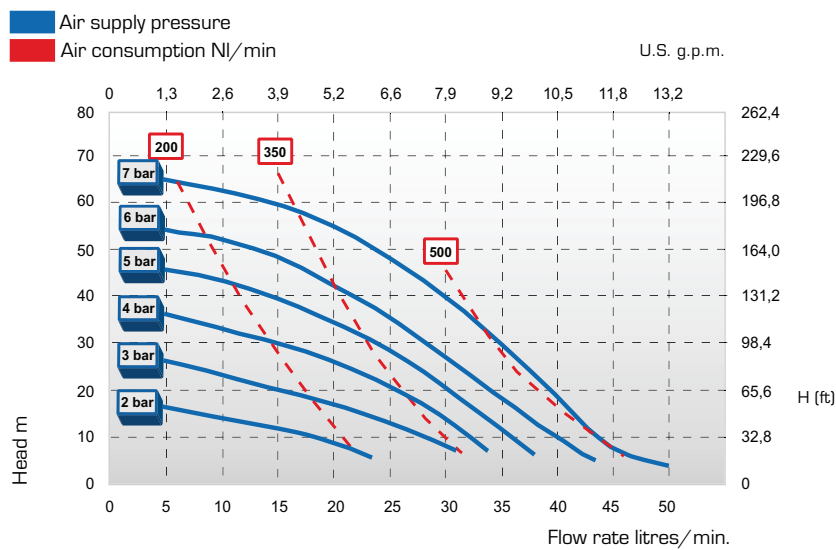


BOXER 50 ALU

Intake/delivery connections	G 1/2" f (standard) with flange DN 15 (on request)	
Air connection	G 3/8" f	
Max. self-priming capacity*	5 m	
Max. flow rate*	50 l/min	
Max. head*	70 m	
Max. air supply pressure	7 bar	
Max. diameter of passing solids (spherical particles)	4 mm	
Construction materials	Weight	Max. operating temp.
PP	3,6 Kg	60°C
PVDF	4,2 Kg	95°C
ALU	4 Kg	95°C
Aisi 316	6,5 Kg	95°C

TECHNICAL DATA

PERFORMANCE



PP

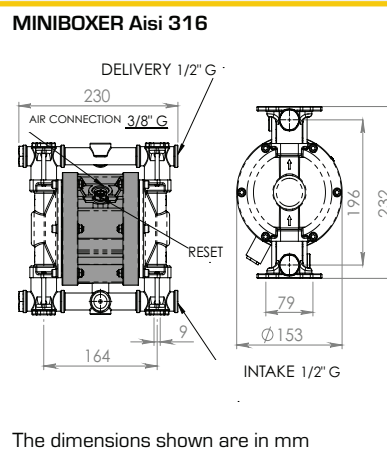
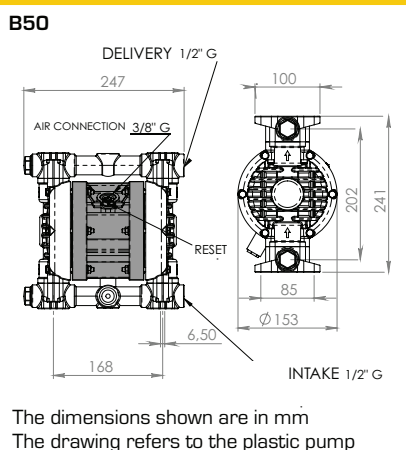


PVDF



MINIBOXER Aisi 316

DIMENSIONS



*The curves and performance values refer to pumps with submerged suction and a free delivery outlet with water at 20°C, and vary according to the construction material. All the values shown are approximate and not binding