




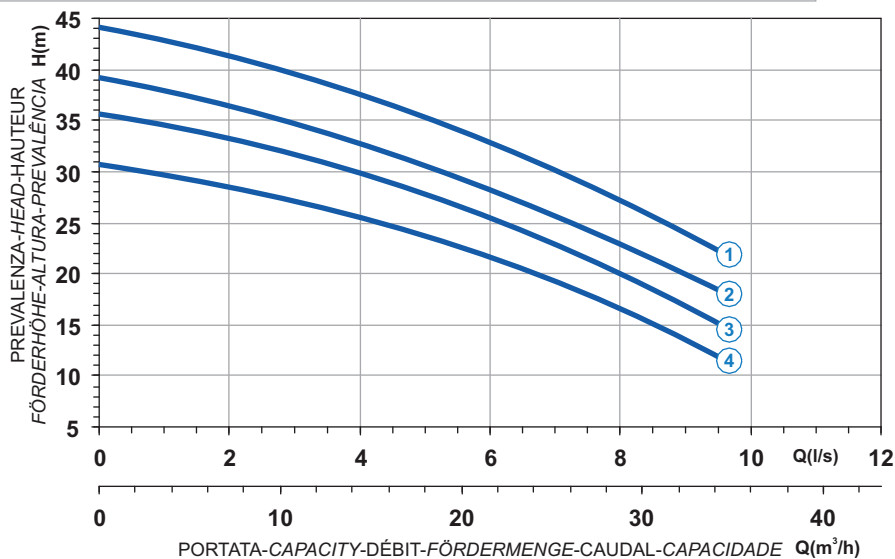



- | | |
|--|--|
|  Ghisa EN-GJL-250 |  Cast Iron EN-GJL-250 |
|  Fonte EN-GJL-250 |  Grauguss EN-GJL-250 |
|  Hierro fundido EN-GJL-250 |  Ferro fundido EN-GJL-250 |

Curva caratteristica - Performance curve - Courbe caractéristique
Kennlinie - Curva característica - Curva característica

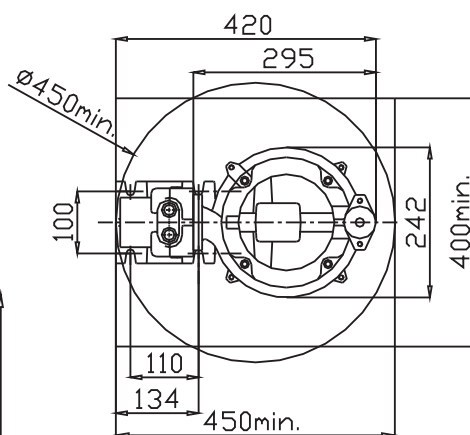
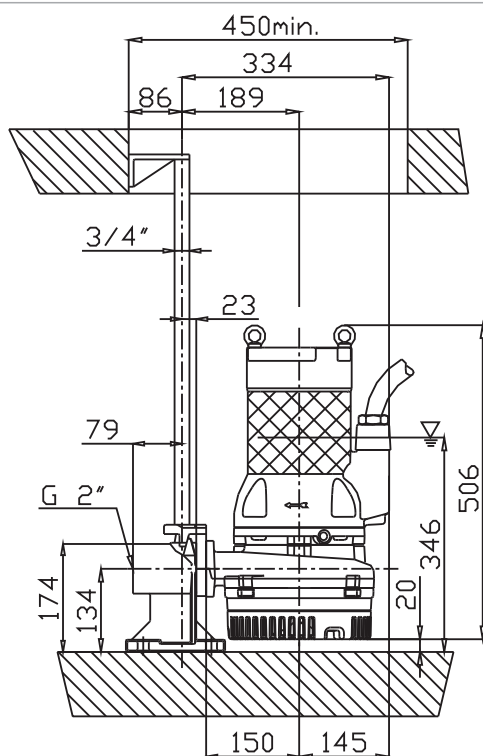


D

Curve N°	Code	Type	MOTOR			ATEX code 
			Nominal power P2 (kW)	Nominal current I (A)	Starting current Is (A)	
1	7003480	G210R6D1-J7AA2	5,7	12,5	73,7	7003481
2	7003482	G210R6D2-J7AA2	5,0	11	65	7003483
3	7003484	G210R6D3-J7AA2	5,0	11	65	7003485
4	7003486	G210R6D4-J7AA2	4,1	8,5	50,1	7003487

Power supply	3ph 400/690V 50Hz
R.P.M.	2850
Free passage (mm)	7
Discharge (mm)	DN 40
Weight (Kg)	63

Dimensioni - Dimensions - Dimensions - Abmessungen - Dimensiones - Dimensões (mm)



▽ LIVELLO MINIMO SOMMERGIBILITÀ
MINIMUM SUBMERSIBLE LEVEL
NIVEAU MINIMUM D'IMMERSION
MINDESTWASSERSTAND
MINIMO NÍVEL
NÍVEL MÍNIMO DE SUBMERGIBILIDADE

