

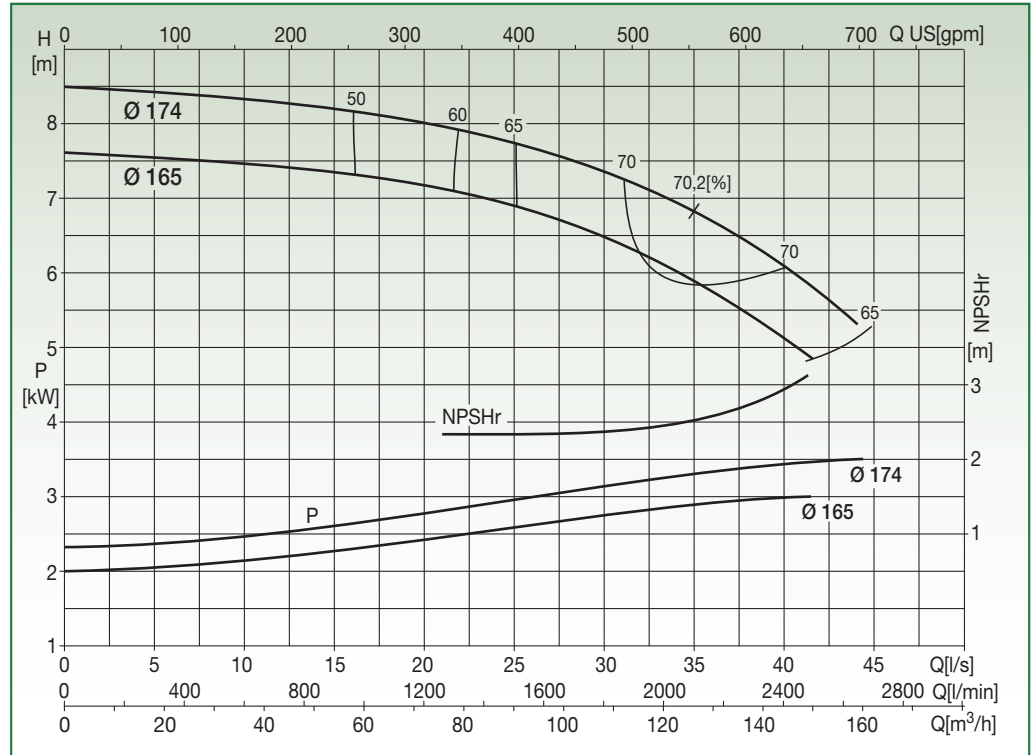
N4SG 100-16

EN 733 STANDARD PUMP 1450 rpm



Liquid temp.: -10°C +120°C
Max. ambient temp.: +40°C

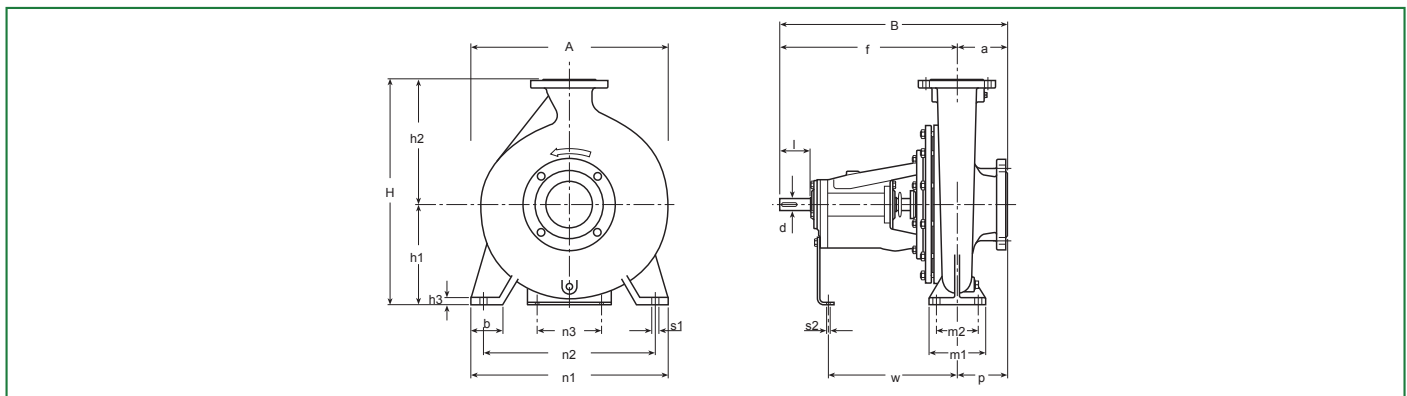
Special versions on request



Test to UNI EN ISO 9906 level 2 - Test liquid: water ($\rho = 1000 \text{ kg/m}^3$, kinematic viscosity $\nu = 1 \text{ mm}^2/\text{s}$)
Tolerance on performance curves to UNI EN ISO 9906 Annex A

PERFORMANCE DATA

Code	Type	Motor P2 Rated		Capacity													
		[kW]	[HP]	l/s	0	5	10	15	20	25	30	35	40	41,5	44		
10038169	N4SG 100-16.165	3	4	H [m]	7,6	7,5	7,4	7,3	7,2	6,9	6,5	5,9	5,1	4,8			
10038170	N4SG 100-16.174	4	5,5	H [m]	8,5	8,4	8,3	8,2	8	7,7	7,3	6,8	6,1	5,8	5,3		



DIMENSIONAL DATA

Type	DNA	DNM	Pump														Shaft		Key	Weight [kg]	A [mm]	B [mm]	H [mm]	Area [m²]	Vol. [m³]	
			a	f	h ₁	h ₂	b	m ₁	m ₂	n ₁	n ₂	n ₃	h ₃	s ₁	s ₂	w	p	d								l
N4SG 100-16	125	100	125	470	200	280	30	160	120	340	260	110	Hi	18	M	342	125	32	80	10x8	71	340	595	480	0,20	0,10