

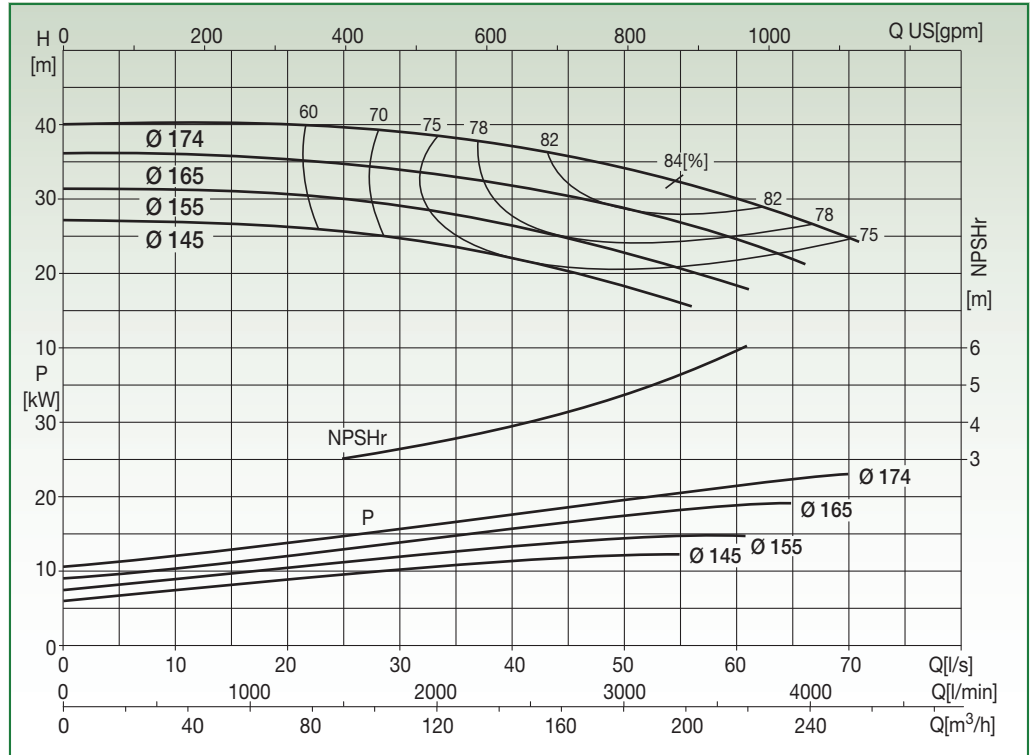
N2SG 80-16

EN 733 STANDARD PUMP 2900 rpm



Liquid temp.: -10°C +120°C
Max. ambient temp.: +40°C

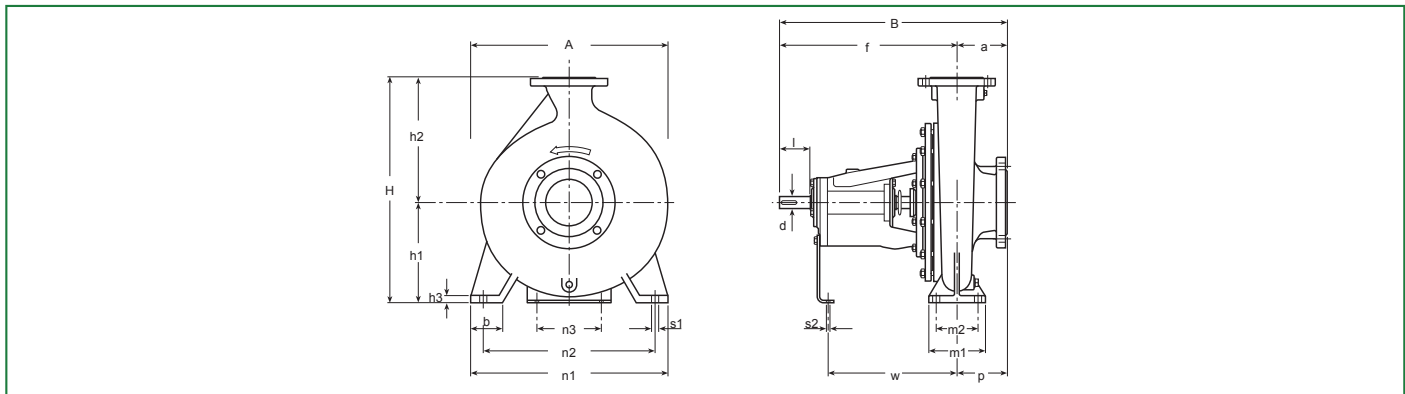
Special versions on request



Test to UNI EN ISO 9906 level 2 - Test liquid: water ($\rho = 1000 \text{ kg/m}^3$, kinematic viscosity $\nu = 1 \text{ mm}^2/\text{s}$)
Tolerance on performance curves to UNI EN ISO 9906 Annex A

PERFORMANCE DATA

Code	Type	Motor P2 Rated		Capacity										
		[kW]	[HP]	l/s	0	10	20	30	40	50	55	60	65	70
				m³/h	0	36	72	108	144	180	198	216	234	252
10038010	N2SG 80-16.145	15	20	H [m]	27	26,8	26,1	24,7	22	18,2	16			
10038011	N2SG 80-16.155	15	20		31,3	31,2	30,6	29	26,3	22,7	20,6	18,2		
10038012	N2SG 80-16.165	22	30		36	36	35,3	33,8	31,7	28,6	26,8	24,5	21,8	
10038013	N2SG 80-16.174	30	40		40	40,3	40	39	37	34	32,2	29,9	27,4	24,7



DIMENSIONAL DATA

Type	DNA	DNM	Pump													Shaft		Key	Weight [kg]	A [mm]	B [mm]	H [mm]	Area [m²]	Vol. [m³]		
			a	f	h ₁	h ₂	b	m ₁	m ₂	n ₁	n ₂	n ₃	h ₃	s ₁	s ₂	w	p								d	l
N2SG 80-16	100	80	125	360	180	225	65	125	95	320	250	110	14	14	14	267	125	24	50	8x7	54	320	485	405	0,16	0,06

BARE SHAFT